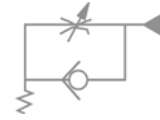
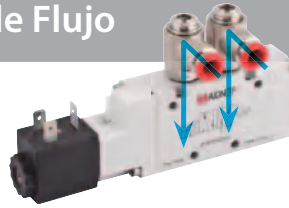


Serie FUNCTION

Reguladores de Flujo

Unidireccional para válvula

Usado cuando no es posible el anterior, por emplazamiento, etc. regula desde la válvula



Sentido de Regulación

Regulación a destornillador

Rosca universal (short)

50910



Código	Ref.	Pack	■
50910 3 M5	5091000001	10	
50910 4 M5	5091000002	10	
50910 4 1/8	5091000003	10	
50910 5 M5	5091000004	10	
50910 5 1/8	5091000005	10	
50910 5 1/4	5091000006	10	
50910 6 M5	5091000007	10	
50910 6 1/8	5091000008	10	
50910 6 1/4	5091000009	10	
50910 8 1/8	5091000010	10	
50910 8 1/4	5091000011	10	
50910 8 3/8	5091000016	10	
50910 10 1/4	5091000017	10	
50910 10 3/8	5091000012	10	
50910 12 3/8	5091000013	10	
50910 12 1/2	5091000014	10	
50910 14 1/2	5091000015	10	

Rosca cilíndrica con junta tórica

55912



Código	Ref.	Pack	■
55912 4 1/8	5591200003	10	
55912 6 1/8	5591200008	10	
55912 6 1/4	5591200009	10	
55912 8 1/8	5591200010	10	
55912 8 1/4	5591200011	10	
55912 8 3/8	5591200012	10	
55912 10 1/4	5591200016	10	
55912 10 3/8	5591200013	10	
55912 12 3/8	5591200014	10	
55912 12 1/2	5591200015	10	

56910



Código	Ref.	Pack	■
56910 4 M5	5691000001	10	
56910 6 M5	5691000002	10	

Regulador con rosca hembra

8962



Código	Ref.	Pack	■
8962 1/8	0896200001	10	
8962 1/4	0896200002	10	
8962 3/8	0896200003	10	

57910



Código	Ref.	Pack	■
57910 4 M5	5791000002	10	
57910 4 1/8	5791000003	10	
57910 5 M5	5791000004	10	
57910 5 1/8	5791000005	10	
57910 5 1/4	5791000006	10	
57910 6 M5	5791000007	10	
57910 6 1/8	5791000008	10	
57910 6 1/4	5791000009	10	
57910 8 1/8	5791000010	10	
57910 8 1/4	5791000011	10	
57910 8 3/8	5791000016	10	
57910 10 1/4	5791000017	10	
57910 10 3/8	5791000012	10	
57910 12 3/8	5791000013	10	
57910 12 1/2	5791000014	10	
57910 14 1/2	5791000015	10	

Regulación a pomo manual

Rosca universal (short)

50915



Código	Ref.	Pack	■
50915 3 M5	5091500001	10	
50915 4 M5	5091500002	10	
50915 4 1/8	5091500003	10	
50915 5 M5	5091500004	10	
50915 5 1/8	5091500005	10	
50915 5 1/4	5091500006	10	
50915 6 M5	5091500007	10	
50915 6 1/8	5091500008	10	
50915 6 1/4	5091500009	10	
50915 8 1/8	5091500010	10	
50915 8 1/4	5091500011	10	
50915 8 3/8	5091500016	10	
50915 10 1/4	5091500017	10	
50915 10 3/8	5091500012	10	
50915 12 3/8	5091500013	10	
50915 12 1/2	5091500014	10	
50915 14 1/2	5091500015	10	

55915



Código	Ref.	Pack	■
55915 4 M5	5591500002	10	
55915 4 1/8	5591500003	10	
55915 5 M5	5591500004	10	
55915 5 1/8	5591500005	10	
55915 5 1/4	5591500006	10	
55915 6 M5	5591500007	10	
55915 6 1/8	5591500008	10	
55915 6 1/4	5591500009	10	
55915 8 1/8	5591500010	10	
55915 8 1/4	5591500011	10	
55915 8 3/8	5591500012	10	
55915 10 3/8	5591500013	10	
55915 12 3/8	5591500014	10	
55915 12 1/2	5591500015	10	

57915



Código	Ref.	Pack	■
57915 4 M5	5791500002	10	
57915 4 1/8	5791500003	10	
57915 5 M5	5791500004	10	
57915 5 1/8	5791500005	10	
57915 5 1/4	5791500006	10	
57915 6 M5	5791500007	10	
57915 6 1/8	5791500008	10	
57915 6 1/4	5791500009	10	
57915 8 1/8	5791500010	10	
57915 8 1/4	5791500011	10	
57915 8 3/8	5791500016	10	
57915 10 1/4	5791500017	10	
57915 10 3/8	5791500012	10	
57915 12 3/8	5791500013	10	
57915 12 1/2	5791500014	10	
57915 14 1/2	5791500015	10	

Rosca cilíndrica con junta tórica

55916



Código	Ref.	Pack	■
55916 6 1/4	5591600009	10	
55916 8 1/8	5591600010	10	
55916 8 1/4	5591600011	10	
55916 8 3/8	5591600012	10	
55916 10 1/4	5591600016	10	
55916 10 3/8	5591600013	10	
55916 12 3/8	5591600014	10	
55916 12 1/2	5591600015	10	

56945



Código	Ref.	Pack	■
56945 4 M5	5694500001	10	
56945 4 1/8	5694500003	10	
56945 6 M5	5694500002	10	
56945 6 1/8	5694500004	10	

Regulador con rosca hembra

8967



Código	Ref.	Pack	■
8967 1/8	0896700001	10	
8967 1/4	0896700002	10	
8967 3/8	0896700003	10	